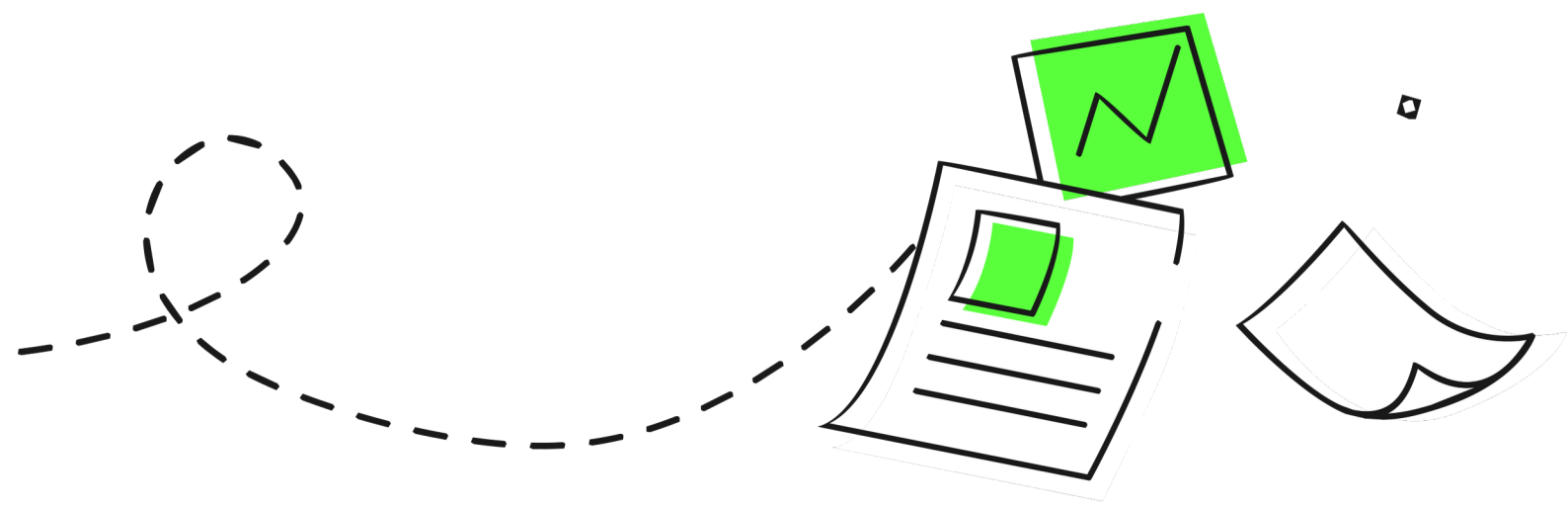




# DOCUMENTS & PACKAGES

2025



## LYD Price List

	Cost	Best Practice	Strategists
All Purposes Indemnity Deed	\$165	✓	✓
All Purposes Loan Agreement	\$165	✓	✓
Business Partnership Agreement	\$165	✓	✓
Call Option Deed	\$165	✓	✓
Commercial Property Lease	\$165	✓	✓
Deed of Assignment of Property	\$165	✓	✓
Deed of Gift - Cash, Assets & Unpaid Present Entitlements	\$165	✓	✓
Deed of Loan Forgiveness	\$165	✓	✓
Division 7A Loan Agreement	\$165	✓	✓
Equipment and Motor Vehicle Lease Agreement	\$165	✓	✓
Equipment Hire Agreement	\$165	✓	✓
Farm Lease Agreement	\$229	✓	✓
General Security Deed for PPSR	\$165	✓	✓
Joint Venture Partnership Agreement	\$165	✓	✓
Mortgage Deed	\$165	✓	✓
NDA and Confidentiality Agreement	FREE	✓	✓
Operating Lease Agreement	\$229	✓	✓
Put Option Deed	\$165	✓	✓
Related Party Partnership Agreement	\$165	✓	✓
Rental Reduction Agreement	\$165	✓	✓
Services Agreement - General Purposes	\$165	✓	✓
Shareholders Agreement	\$249	✓	✓
SMSF Loan Agreement	\$165	✓	✓

	Cost ASIC fee applies	Best Practice	Strategists
Family Protection Trustee Company	\$726	✓	✓
SMSF Special Purpose Company	\$726	✓	✓
Leading Member SMSF Special Purpose Trustee Company	\$726	✓	✓
Leading Member Discretionary Trustee Company	\$726	✓	✓
Standard Company - Successor Director option available	\$726	✓	✓

	Cost	Best Practice	Strategists
Company Constitution Variation to Leading Member Discretionary Trustee Company	\$165	✓	✓
Company Constitution Variation to Leading Member SMSF Corporate Trustee	\$229	✓	✓
Company Constitution Variation to LightYear Docs Family Protection Trust Company	\$165	✓	✓
Company Constitution Variation to LightYear Docs SMSF Special Purpose Company	\$165	✓	✓
Resolution to Revoke a Successor Director	\$165	✓	✓
Special Resolution for Changing the Name of a Company	\$165	✓	✓
The Successor Director Solution – Single Company plus upgrade	\$229	✓	✓
Upgrade to LightYear Docs Standard Company	\$165	✓	✓

	Cost	Best Practice	Strategists
Lending Deed of Promissory Note	\$165	✓	✓
LRBA Holding Trust Pack - Bank Lending	\$229	✓	✓

	Cost	Best Practice	Strategists
Change of Trustee for SMSFs	\$165	✓	✓
Contributions Suspense Account	\$165	✓	✓
Contributions To Benefit a Member	\$165	✓	✓
Deed of Vesting (SMSF)	\$165	✓	✓
Leading Member SMSF Deed of Variation	\$229	✓	✓
Leading Member SMSF Deed Upgrade	\$229	✓	✓
Leading Member SMSF Establishment	\$229	✓	✓
Leading Member SMSF Establishment with EPOA	\$229	✓	✓
Member Appointment - Standard SMSF (non-leading member)	\$165	✓	✓
Member Appointment – Leading Member SMSF	\$165	✓	✓
Member Directed Investment Strategy	\$49	✓	✓
Member Leaving a SMSF	\$165	✓	✓
Notification to Trustee of Mental Incapacity of Member	\$49	✓	✓
QROPS SMSF Deed of Variation	\$165	✓	✓
QROPS SMSF Establishment	\$165	✓	✓
SMSF Deed of Variation	\$165	✓	✓
SMSF Establishment Trust Deed	\$165	✓	✓
SMSF Family Law Splitting Notice	\$165	✓	✓
SMSF Investment Strategy	\$49	✓	✓
SMSF Notification of Death of Member	\$49	✓	✓
SMSF Retirement of a Member	\$49	✓	✓
Superannuation Lump Sum	\$165	✓	✓

	Cost	Best Practice	Strategists
Account Based Pension	\$165	✓	✓
Account Based Pension Current Year Pension Payment	\$49	✓	✓
Account Based Pension Rollback	\$165	✓	✓
Addition of a Reversionary Pension	\$295	✓	✓
Convert TRIS to Account Based Pension	\$165	✓	✓
Partial TRIS Commutation	\$165	✓	✓
Pension Commutation	\$165	✓	✓
Temporary Incapacity Income Stream	\$165	✓	✓
Transition to Retirement Income Stream (TRIS)	\$165	✓	✓
TRIS Current Year Income Payment	\$49	✓	✓
TRIS Foldback	\$165	✓	✓

Trusts  
Establishments

	Cost	Best Practice	Strategists
Crypto Discretionary Trust Deed	\$165	✓	✓
Discretionary Trust (Individual and Corporate)	\$165	✓	✓
Discretionary Trust (Non-Foreign Person)	\$165	✓	✓
Family Protection Trust (Individual and Corporate)	\$229	✓	✓
Family Protection Trust (Non-Foreign Person)	\$229	✓	✓
Fixed Unit Trust (NSW Land Tax)	\$165	✓	✓
Fixed Unit Trust (For Taxation Purposes)	\$165	✓	✓
Hybrid Trust Deed	\$165	✓	✓
Leading Member Discretionary Trust (Individual and Corporate)	\$229	✓	✓
Leading Member Discretionary Trust (Non-Foreign Person)	\$229	✓	✓
Non Fixed Unit Trust (Individual and Corporate)	\$165	✓	✓
SIS Reg 13.22C Related Unit Trust	\$165	✓	✓
Superannuation Unrelated Investment Trust (SUIT)	\$165	✓	✓

## Trusts Maintenance

	Cost	Best Practice	Strategists
Addition to Designated Beneficiaries	\$165	✓	✓
Bare Trust	\$165	✓	✓
Change of Trustee for Discretionary Trusts	\$165	✓	✓
Changes to Discretionary Trust Positions and Name	\$229	✓	✓
Deed of Appointment of Joint Appointor	\$165	✓	✓
Deed of Succession Appointors and LM Appointors	\$165	✓	✓
Deed of Vesting Discretionary Trust	\$165	✓	✓
Deed of Vesting Unit Trust	\$165	✓	✓
Discretionary Trust Distribution Resolution	\$165	✓	✓
Upgrade of Discretionary Trust to a Family Protection Trust	\$165	✓	✓
Upgrade of Discretionary Trust to a Family Protection Trust Non - Foreign Person	\$165	✓	✓
Upgrade of Discretionary Trust to a LightYear Docs Strategic Discretionary Trust	\$165	✓	✓
Upgrade of Discretionary Trust to a Non-Foreign Person Discretionary Trust	\$165	✓	✓
Upgrade of Discretionary Trust to Leading Member Discretionary Trust	\$165	✓	✓
Upgrade of Discretionary Trust to Leading Member Non-Foreign Person Discretionary Trust	\$165	✓	✓
Upgrade of Existing Leading Member Discretionary Trust	\$165	✓	✓

	Cost	Best Practice	Strategists
Advance Care Directive – Queensland (AHCD QLD)	Strategist Access Only		✓
Advance Care Directive – South Australia (AHCD SA)	Strategist Access Only		✓
Advance Care Directive – Western Australia (AHCD WA)	Strategist Access Only		✓
Advance Care Directive (Tas)	Strategist Access Only		✓
Advance Care Directive and Enduring Guardian – NSW	Strategist Access Only		✓
Advance Care Directive and Enduring Guardian – Vic	Strategist Access Only		✓
Advance Care Plan (ACT)	Strategist Access Only		✓
Advance Personal Plan (NT)	Strategist Access Only		✓
Buy/Sell Option Agreement	Strategist Access Only		✓
Dependancy Declaration for Superannuation and Income Tax Purposes	Strategist Access Only		✓
Enduring Power of Attorney	Strategist Access Only		✓
Enduring Power of Guardian(WA)	Strategist Access Only		✓
Enduring Power of Guardian(NSW)	Strategist Access Only		✓
Enduring Power of Guardian(TAS)	Strategist Access Only		✓
EPOA and Will Automation	Strategist Access Only		✓
Family Allowance Agreement	Strategist Access Only		✓
LYD Will (with Testamentary Trust option)	Strategist Access Only		✓
Power of Attorney - Tax Affairs	Strategist Access Only		✓
SMSF Will with Death Benefits Protection Trust	Strategist Access Only		✓

	Cost	Best Practice	Strategists
Corporate Trustee & Deed Upgrade to LightYear Docs	Strategist Access Only		✓
Deed of Ratification of Verbal Trust Distribution Minutes	Strategist Access Only		✓
Division 7A Solution	Strategist Access Only		
Leading Member Kit - Upgrade of SMSF Deed and Corporate Trustee to Leading Member control	Strategist Access Only		✓
Related Party LRBA (Property) meeting ATO Guidelines	Strategist Access Only		✓
Related Party LRBA (Shares) meeting ATO Guidelines	Strategist Access Only		✓
SMSF Will with Death Benefits Protection Trust	Strategist Access Only		✓
The Business Protector	Strategist Access Only		✓
The Enforcer	Strategist Access Only		✓
The Moat and Castle	Strategist Access Only		✓
The Protector	Strategist Access Only		✓
The Successor Director Solution – Multi Company plus upgrade Constitution	Strategist Access Only		✓

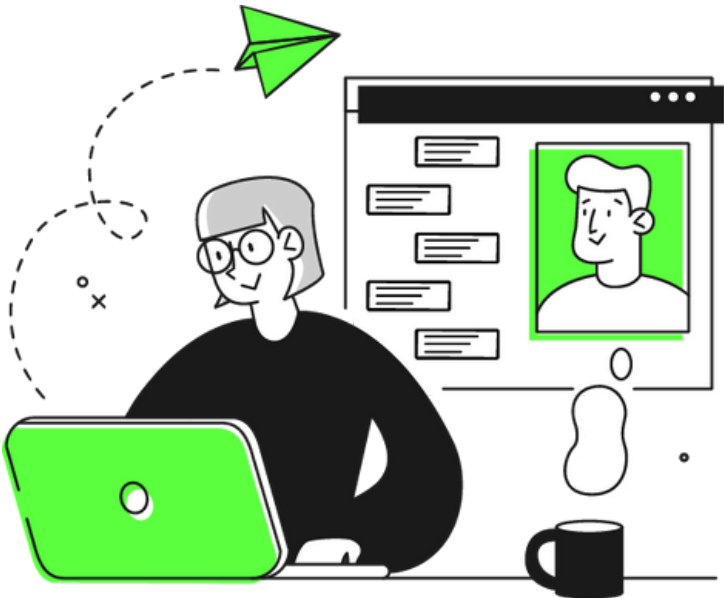
	Cost	Best Practice	Strategists
Company Constitution Variation to Leading Member Discretionary Trustee Company	\$165	✓	✓
Company Constitution Variation to Leading Member SMSF Corporate Trustee	\$165	✓	✓
Leading Member Discretionary Trust (Individual and Corporate)	\$229	✓	✓
Leading Member Discretionary Trust (Non-Foreign Person)	\$229	✓	✓
Leading Member Discretionary Trustee Company	\$726	✓	✓
Leading Member SMSF Deed of Variation	\$229	✓	✓
Leading Member SMSF Deed Upgrade	\$229	✓	✓
Leading Member SMSF Establishment	\$229	✓	✓
Leading Member SMSF Establishment with EPOA	\$229	✓	✓
Leading Member SMSF Special Purpose Trustee Company	\$726	✓	✓
Member Appointment – Leading Member SMSF	\$165	✓	✓
Upgrade of Discretionary Trust to a Leading Member Non-Foreign Person Discretionary Trust	\$165	✓	✓
Upgrade of Discretionary Trust to Leading Member Discretionary Trust	\$165	✓	✓

	Cost	Best Practice	Strategists
Basic Employment Agreement	\$229	✓	✓
Basic Employment Agreement (Long Form)	\$229	✓	✓
Casual Conversion Letter	\$229	✓	✓
Casual Employment Agreement	\$229	✓	✓
Contractor Confidentiality Agreement	\$229	✓	✓
Contractor's Agreement - Company Contractor (Long form)	\$229	✓	✓
Contractor's Agreement - Individual Contractor (Long form)	\$229	✓	✓
Cover Letter to Amend Employment Agreement	\$229	✓	✓
Employee Agreement for Apprentice or Trainee	\$229	✓	✓
Employee Agreement for Professional Employee	\$229	✓	✓
Employee Confidentiality Agreement	\$229	✓	✓
Employee Confidentiality Agreement (Long Form)	\$229	✓	✓
Employee Cover Letter	\$229	✓	✓
Executive Employment Agreement	\$229	✓	✓
Final Warning Letter	\$229	✓	✓
Formal Warning Letter	\$229	✓	✓
Letter of Successful Completion of Probation Period	\$229	✓	✓
Letter of Termination - for Misconduct, without Notice	\$229	✓	✓
Letter of Termination with Notice	\$229	✓	✓
Part Time Employment Agreement (Short Form)	\$229	✓	✓
Part Time Work Agreement	\$229	✓	✓
Recruitment Services Agreement	\$229	✓	✓
Superannuation Fund Letter	\$229	✓	✓

	Cost	Best Practice	Strategists
Annual Leave Clause	\$49	✓	✓
Bonus Performance Based	\$49	✓	✓
Commission Based on Actual Revenue	\$49	✓	✓
Commission Based on Actual Sales	\$49	✓	✓
Community Service Leave	\$49	✓	✓
Compassionate Leave	\$49	✓	✓
Disclosure of Intellectual Contract	\$49	✓	✓
Employee Requests for Flexible Working Arrangements	\$49	✓	✓
Employer Responding to a Request for Flexible Workhours	\$49	✓	✓
Flexible Working Arrangements	\$49	✓	✓
Flexible Working Arrangements (long form)	\$49	✓	✓
Fringe Benefits Tax	\$49	✓	✓
Fringe Benefits Tax (long form)	\$49	✓	✓
Gardening Leave	\$49	✓	✓
Incorporating Provisions of Industrial Instruments	\$49	✓	✓
Jury Service Leave	\$49	✓	✓
Leave Without Pay	\$49	✓	✓
Loyalty and Duties	\$49	✓	✓
Motor Vehicle Fuel Card and Employees Vehicle	\$49	✓	✓
Motor Vehicles Use of Employers Vehicle	\$49	✓	✓
Non Compete	\$49	✓	✓
Non Solicitation Clause	\$49	✓	✓
Parental Leave	\$49	✓	✓
Payslip Template	\$49	✓	✓
Personal and/or Carers Leave	\$49	✓	✓
Policies and Procedures	\$49	✓	✓
Pre Employment Medical Checks	\$49	✓	✓
Professional Membership Fees	\$49	✓	✓
Refund for Use of Employees Vehicle	\$49	✓	✓
Reimbursement of Reasonable Travel Expenses	\$49	✓	✓
Salary Sacrifice	\$49	✓	✓
Specified Travel Expenses	\$49	✓	✓
Summary Dismissal	\$49	✓	✓
Termination of Executive	\$49	✓	✓
Unpaid Study Leave	\$49	✓	✓
Working Hours	\$49	✓	✓

Absenteeism Policy	\$49	✓	✓
Acceptable IT use Policy	\$49	✓	✓
Anti-discrimination Policy	\$49	✓	✓
Bring Your Own Device Policy	\$49	✓	✓
Confidentiality Policy	\$49	✓	✓
Conflict of Interest Policy	\$49	✓	✓
Drug and Alcohol Policy	\$49	✓	✓
Employee Remote Working Policy	\$49	✓	✓
Employee Standard of Conduct Guidelines	\$49	✓	✓
Grievance Policy	\$49	✓	✓
Harrassment and Bullying Policy	\$49	✓	✓
Long Service Leave Policy	\$49	✓	✓
Mental Health and Wellbeing Policy	\$49	✓	✓
No Smoking Policy	\$49	✓	✓
Performance Management Policy	\$49	✓	✓
Personal Leave Policy	\$49	✓	✓
Redundancy Policy	\$49	✓	✓
Social Media Policy	\$49	✓	✓
Termination of employment Policy	\$49	✓	✓
Travel Expense and Expense Management	\$49	✓	✓
Travel Policy and Guidelines	\$49	✓	✓
Victimisation Policy	\$49	✓	✓
Workplace Surveillance Policy	\$49	✓	✓

**Please contact**  
**sales@lyd.com.au** to discuss  
**upgrading your membership**  
**if you would like access to**  
**more documents.**





# It's everything you need, nothing you don't.

Automate the manual process of document preparation and deliver solutions quicker to your clients.

<div><div>Lite</div><div><div>\$PAYG</div><div>AUD</div></div><div><div>Pay Per Doc</div><div>1 User</div></div><div>For sole-traders or small firms that require the occasional doc.</div><div><div>Plan Includes:</div><div><div>Pay as You Go Documents</div><div>Documents from \$165</div><div>Public Webinar Access Only</div><div>Surge App Access</div><div>Hard Copy Ordering*</div></div></div></div>	<div><div>Best Practice</div><div><div>\$ 330</div><div>per month</div><div>AUD</div></div><div><div>200 Docs / year</div><div>Up to 5 Users</div></div><div>For mid-tier firms that regularly create document for clients.</div><div><div>Plan Includes:</div><div><div>Public Access Support Site</div><div>Basic Document Support</div><div>Basic Technical Support</div><div>Webinar Access Only</div><div>Public Webinar Access</div><div>Surge App Access</div><div>Hard Copy Ordering*</div></div></div></div>	<div><div>Strategist</div><div><div>\$ 795</div><div>per month</div><div>AUD</div></div><div><div>Unlimited Docs</div><div>Up to 10 Users</div></div><div>For larger firms requiring the full suite of unlimited documents. Includes estate planning and strategy automations.</div><div><div>Plan Includes:</div><div><div>Estate Planning Access</div><div>Strategy Automations Access</div><div>Full Access Support Site</div><div>Priority Document Support</div><div>Priority Technical Support</div><div>Priority Legal Support*</div><div>Full Webinar Access</div><div>Surge App Access</div><div>Hard Copy Ordering*</div></div></div></div>
---	---	---

\*Additional fees for hard copies and LY legal support may apply \*\*Approved documents only.



# LYD



**We've  
got a doc  
for that.**

[support@lyd.com.au](mailto:support@lyd.com.au)  
[lyd.com.au](http://lyd.com.au)